

Aldreds
Estate Agents



28 Corton Long Lane
Lowestoft, NR32 5HA
Offers Over £425,000



28 Corton Long Lane

Lowestoft, NR32 5HA

Aldreds are delighted to offer this three bedroom detached bungalow situated in Corton Long Lane being one of the most sought after locations in North Lowestoft. The property is within walking distance of Gunton Woods & Nature reserve along with the North Lowestoft beaches. Externally, the property benefits from a generous frontage providing ample off road parking with the option to extend (subject to planning permission). To the rear of the property there is a beautiful South facing lawned garden with a very private side and rear aspect. The spacious internal accommodation includes an 'L' shaped entrance hall, spacious lounge leading into an open plan dining area, a large kitchen/utility area, family bathroom with separate WC, three spacious bedrooms, the master bedroom benefits from an ensuite. Benefits also include gas central heating and uPVC double glazed windows. Bungalows in this location seldom become available and an early viewing is strongly recommended. Offered with no onward chain.

Wide 'L' Shaped Entrance Hall

Fitted carpet, coved ceiling, radiator, a range of full length storage & cloaks cupboards, loft access.

Lounge

17'8" x 12'6" (5.4 x 3.82)

Fitted carpet, coved ceiling, radiator, power points, tv point, double aspect uPVC windows including sliding patio doors leading out to the rear garden, wide opening leading into:-

Formal Dining Room

9'3" x 11'1" (2.84 x 3.4)

Fitted carpet, power points, coved ceiling, uPVC bay window, radiator.

Kitchen

16'7" x 14'8" (max) (5.08 x 4.48 (max))

('L' Shaped) Laminate tiled flooring, a range of fitted kitchen units with extended work surfaces, recess for all white goods including plumbing for a dishwasher and washing machine, stainless steel sink with single drainer, tiled splashbacks, uPVC window, full length airing cupboard, a further cupboard housing the modern energy efficient gas boiler (approximately 1 year old), radiator, double aspect uPVC windows, uPVC door leading out to the front driveway, sliding patio doors leading out to the rear garden.





Family Bathroom

Fitted bathroom flooring, bathroom suite comprising a shower set over a panel bath, pedestal sink, fully tiled walls, uPVC window, heated towel rail.

Separate WC

Fitted bathroom flooring, low level WC, part tiled walls, uPVC window.

Bedroom 1

13'5" x 11'8" (4.09 x 3.58)

Fitted carpet, coved ceiling, radiator, power points, full length fitted wardrobes with sliding doors, door to:-

Ensuite Bathroom

Vinyl flooring, bathroom suite comprising a shower set over a panel bath, low level WC, vanity sink unit, tiled splashbacks, full length heated towel rail, uPVC window.

Bedroom 2

10'8" x 8'11" (3.27 x 2.74)

Fitted carpet, uPVC bay window, radiator, power points, full length fitted wardrobe,

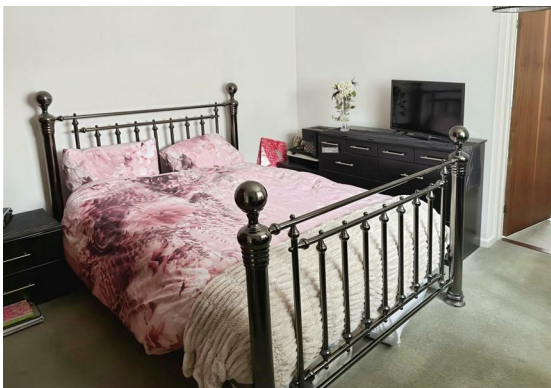
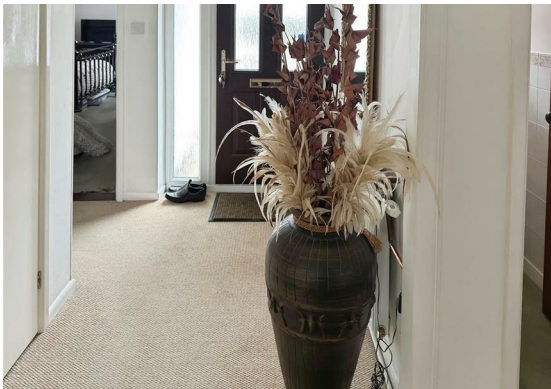
Bedroom 3

9'1" x 10'4" (2.79 x 3.16)

Fitted carpet, coved ceiling, uPVC window, radiator, power points, full length cupboard/wardrobe.

Outside

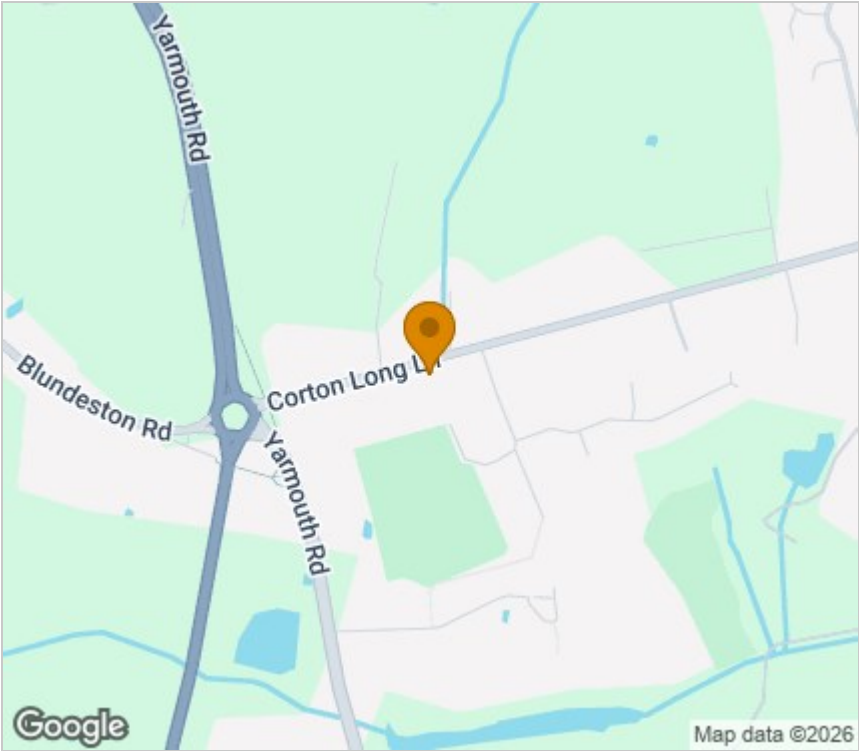
To the front of the property there is a generous frontage providing ample off road parking for a variety of vehicles, long stoned driveway, lawned garden area, all enclosed by high trees and shrubs, detached brick built garage with up and over door, power & lighting. To the rear there is a beautiful South facing lawned garden with a very private rear and side aspect, timber and felt summerhouse, spacious patio seating area providing ample space for bistro style dining, a range of flower & shrub borders, all enclosed by high timber fencing.



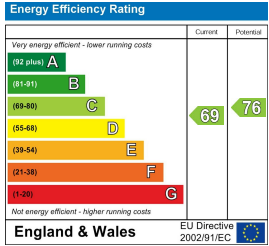
Floor Plan



Area Map



Energy Efficiency Graph



Viewing

Please contact our Aldreds Lowestoft Office on 01502 565432 if you wish to arrange a viewing appointment for this property or require further information.

Disclaimer
These particulars are issued on an understanding that all negotiations shall be conducted through Messrs. Aldreds. Please note: Messrs. Aldreds for themselves and for the vendors or lessors of this property whose agents they are given notice that: 1. Particulars are set out as a general outline only for guidance of intending purchasers or lessees, and do not constitute nor constitute part of, an offer or contract. 2. All descriptions, dimensions, references to condition and necessary permissions for use and occupation, and other details are given without responsibility and any intending purchasers or tenants should not rely on them as statements or representations of fact but must satisfy themselves by inspection or otherwise as to the correctness of each of them. 3. No person in the employment of Messrs. Aldreds has any authority to make or give any representation or warranty whatever in relation to this property. 4. If you are proposing to visit the property and are travelling some distance please check with Aldreds on the issue of availability prior to travelling. 5. Aldreds Property Consultants and associated services may offer additional services to the prospective purchaser for which they will be entitled to receive a commission.
Aldreds are pleased to be working with Mortgage Advice Bureau. They're an award-winning mortgage broker with over 1,400 advisers across the UK, and have access to over 12,000 mortgage products from over 90 lenders. Aldreds Estate Agents Ltd receive a commission of £200 on each completed case. Your home may be repossessed if you do not keep up repayments on your mortgage. There may be a fee for mortgage advice. The actual amount you pay will depend upon your circumstances. The fee is up to 1%, but a typical fee is 0.3% of the amount borrowed. Mortgage Advice Bureau is a trading name of Mortgage Seeker Limited which is an appointed representative of Mortgage Advice Bureau Limited and Mortgage Advice Bureau (Derby) Limited which are authorised and regulated by the Financial Conduct Authority. Mortgage Seeker Limited Registered Office: Lovewell Blake, Sixty Six North Quay, Great Yarmouth, Norfolk, NR30 1HE. Registered in England Number: 03721415. 6. Potential purchasers should check with their providers that the broadband and mobile phone coverage they would require is available.

143 London Road North, Lowestoft, Suffolk, NR32 1NE
Tel: 01502 565432 Email: lowestoft@aldreds.co.uk <https://www.aldreds.co.uk/>
Registered in England Reg. No. 08945751 Registered Office: 17 Hall Quay, Great Yarmouth, Norfolk NR30 1HJ
Directors: Mark Duffield B.S.c. FRICS. Dan Crawley MNAEA Paul Lambert MNAEA